

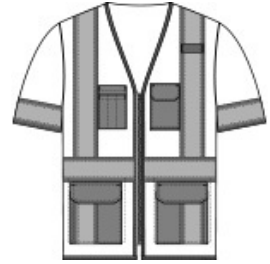


CornerStone[®] ANSI 107 Class 3 Surveyor Mesh Zippered Two-Tone Short Sleeve Vest. CSV106



Built for surveyors or anyone who needs the highest ANSI visibility, this breathable, comfortable two-tone vest has short sleeves to meet ANSI 107 Class 3 requirements.

- 100% polyester mesh for breathability
- 100% polyester tricot exterior pockets for durability and easy decoration
- Durable, reflective 2-inch tape meets ANSI 107 requirements and provides 360-degree visibility on body and sleeves
- Two-tone contrast polyester tricot fabric under reflective tape; contrast binding
- Left chest bellows pocket with flap and hook and loop closure
- Two layered right chest pockets: one open, one divided
- Two lower front flap pockets with hook and loop closures
- Interior open lower mesh pockets on both sides
- Mic clip at left chest for easy access
- Molded center front zippered closure
- This garment must be fully zipped to be in compliance with ANSI 107 standards



front

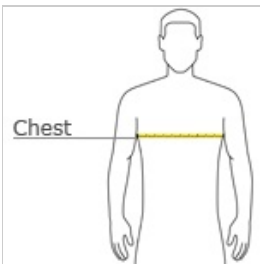


back

CARE INSTRUCTIONS

Machine wash cold. Do not bleach. Tumble dry low. Permanent press. Do not iron. Do not dry clean. Max- 25 washes.

HOW TO MEASURE



CHEST WIDTH

Measure under the arm and around the fullest part of the chest with arms down, keeping tape horizontal.

SIZE CHART

| | M | L | XL | 2XL | 3XL | 4XL | 5XL |
|-------|-------|-------|-------|-------|-------|-------|-------|
| Chest | 38-40 | 41-43 | 44-46 | 47-49 | 50-53 | 54-57 | 58-60 |

COLOR INFORMATION



Safety Yellow