

*Eddie Bauer*

**Eddie Bauer® Ladies Highpoint Fleece Jacket.  
EB241**



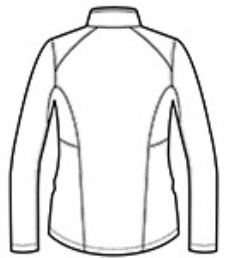
Made for movement, this sophisticated, stretch-infused twill fleece jacket has a smooth face and brushed fleece backing. Tonal welding details at the pockets and streamlined tailoring give it a refined look for indoor and outdoor uses. Beautifully shaped, feminine collar. Molded reverse coil zippers. Front zippered pockets. Contrast Eddie Bauer heat transfer logo on the right hem. Made of 8.3-ounce, 94/6 poly/spandex fleece with an anti-pill finish.

**CARE INSTRUCTIONS**

Machine wash cold. Do not bleach. Tumble dry low. Remove promptly. Cool iron if needed. Do not use softeners



front



back

**HOW TO MEASURE**



**BUST**

Measure under the arm and around the fullest part of the bust with arms down, keeping tape horizontal.

**SIZE CHART**

	XS	S	M	L	XL	2XL	3XL	4XL
Size	2	4/6	8/10	12/14	16/18	20/22	24/26	28/30
Bust	32-33	34-35	36-37	38-40	41-43	44-46	47-49	50-52

**COLOR INFORMATION**



Black  
PMS NTR BLACK  
C



Metal Grey  
PMS COOL GREY  
9 C