



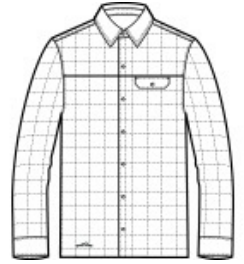
Eddie Bauer® Shirt Jac. EB502



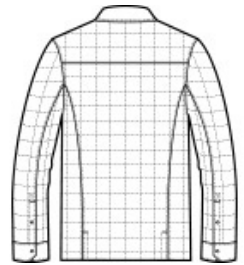
Midweight jacket warmth meets collared shirt style in this shirt jac that blurs the line between the great outdoors and indoors. Snap-front closure and snap cuffs. Drop-in left chest pocket. Contrast Eddie Bauer heat transfer logo on the right hem. Made of 100% polyester fabric and 1.8-ounce, 100% polyester fill. Water-resistant with a PU coating.

CARE INSTRUCTIONS

Machine Wash Cold, Inside Out With Like Colors, Do Not Use Fabric Softener, Only Non-Chlorine Bleach When Needed, Tumble Dry Low, Do Not Iron, Do Not Dry Clean.



front



back

HOW TO MEASURE



CHEST WIDTH

Measure under the arm and around the fullest part of the chest with arms down, keeping tape horizontal.

SIZE CHART

| | 4XL | XS | S | M | L | XL | 2XL | 3XL |
|-------|-------|-------|-------|-------|-------|-------|-------|-------|
| Chest | 55-57 | 32-34 | 35-37 | 38-40 | 41-43 | 44-46 | 48-50 | 52-54 |

COLOR INFORMATION



Black
PMS NTR BLACK
C



Charcoal Grey
Heather
PMS 7540C