



Quilted front and back panels join a water-resistant soft shell to make the Hybrid a trend-right performance jacket with an urban edge.

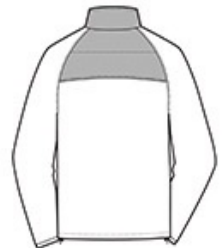
- 100% polyester knit shell bonded to a water-resistant film insert and a 100% polyester microfleece lining
- 100% nylon woven overlays
- Reverse coil zippers
- Interior storm flap with chin guard
- Zippered right chest pocket
- Front zippered pockets
- Port Pocket™ for easy embroidery access
- Binding at cuffs
- Open hem with adjustable locking drawcords

**CARE INSTRUCTIONS**

Machine wash cold with like colors. Do not bleach or use fabric softener. Tumble dry low. Remove promptly. Do not iron. Do not dry clean.



front



back

**HOW TO MEASURE**



**CHEST WIDTH**

Measure under the arm and around the fullest part of the chest with arms down, keeping tape horizontal.

**SIZE CHART**

|       | XS    | S     | M     | L     | XL    | 2XL   | 3XL   | 4XL   |
|-------|-------|-------|-------|-------|-------|-------|-------|-------|
| Chest | 32-34 | 35-37 | 38-40 | 41-43 | 44-46 | 47-49 | 50-53 | 54-57 |

**COLOR INFORMATION**



Deep Black  
PMS NTR BLACK  
C



Skydiver Blue/  
Grey Steel  
PMS 7462 C



Smoke Grey/ Grey  
Steel  
PMS Cool Grey 11  
C