

**Port Authority® Collective Soft Shell Jacket.  
J901**



With a subtle mini ripstop texture, this sophisticated soft shell has double-needle stitching throughout and sleek design lines. The water-resistant film and DWR finish combine to resist wind and rain for weather protection.

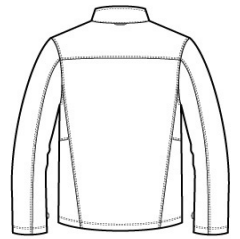
- Can be zipped in and secured by snap attachments inside an outer Collective layer
- 94/6 poly/spandex woven mini ripstop with a DWR finish bonded to a water-resistant film insert and a 100% polyester brushed tricot interior
- 1000MM fabric waterproof rating
- 1000G/M2 fabric breathability rating
- Slightly longer length
- Molded center front zipper
- Front reverse-coil zippered covered pockets

**CARE INSTRUCTIONS**

Machine wash cold with like colors; do not use fabric softener; tumble dry low; remove promptly; only non-chlorine bleach when needed; cool iron if necessary; do not dry clean.



front



back

**HOW TO MEASURE**



**CHEST WIDTH**

Measure under the arm and around the fullest part of the chest with arms down, keeping tape horizontal.

**SIZE CHART**

	XS	S	M	L	XL	2XL	3XL	4XL
Chest	32-34	35-37	38-40	41-43	44-46	47-49	50-53	54-57

**COLOR INFORMATION**



Deep Black  
PMS NTR BLACK  
C



Graphite  
PMS 7540C



Gusty Grey  
PMS COOL GRAY  
8C



Night Sky Blue  
PMS 654C



River Blue Navy