

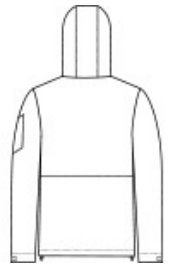


This fully seam-sealed, wind-resistant, insulated jacket offers outstanding waterproof protection to help keep you dry in the stands or on the street.

- 100% polyester with water-resistant face coating
- Jersey-lined body and hood
- 2.4-ounce polyfill insulation in body
- 1.8-ounce polyfill insulation in hood and sleeves
- Polyester taffeta sleeves for easy on/off
- 5000MM fabric waterproof rating
- 3000G/M2 fabric breathability rating
- Tag-free label
- Three-panel hood with drawcord and toggles
- Exposed molded zipper
- Left arm zippered pocket
- Adjustable self-fabric tab cuffs with hook and loop closures
- Front pouch pocket
- Port Pocket™ for easy embroidery access
- Adjustable locking drawcord at hem



front

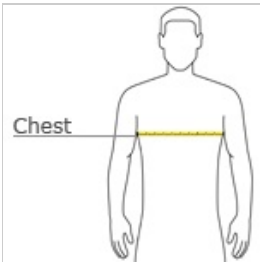


back

**CARE INSTRUCTIONS**

Machine Wash Cold With Like Colors Or Separate. Do Not Use Fabric Softener. Non-Chlorine Bleach When Needed. Tumble Dry Low. Do Not Iron.

**HOW TO MEASURE**



**CHEST WIDTH**

Measure under the arm and around the fullest part of the chest with arms down, keeping tape horizontal.

**SIZE CHART**

	XS	S	M	L	XL	2XL	3XL	4XL
Chest	32-34	35-37	38-40	41-43	44-46	47-49	50-53	54-57

**COLOR INFORMATION**



Black  
PMS BLACK C



Forest Green  
PMS 553C



Graphite  
PMS 432C



True Navy  
PMS 533C



True Royal  
PMS 7687C