



Ultra-soft meets cozy warmth in this layerable sherpa fleece jacket. Ideal for cooler days, it's comfortable, versatile and designed to fend off the chill in style.

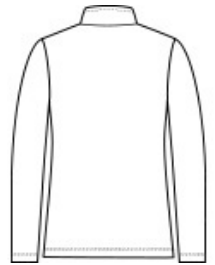
- 6.8-ounce, 100% polyester sherpa fleece
- Reverse coil zipper
- Dyed-to-match neck tape, zipper and zipper pull
- Open front pockets
- Open cuffs and hem

CARE INSTRUCTIONS

Machine wash cold separately. Do not bleach. Tumble dry low. Remove promptly. Cool iron if necessary.



front



back

HOW TO MEASURE



BUST

Measure under the arm and around the fullest part of the bust with arms down, keeping tape horizontal.

SIZE CHART

	XS	XS	S	S	M	M	L	L	XL	XL	XXL	3XL	3XL	4XL	4XL
Size	2	2	4/6	4/6	8/10	8/10	12/14	12/14	16/18	16/18	20/22	24/26	24/26	28/30	28/30
Bust	32-34	32-34	35-36	35-36	37-38	37-38	39-41	39-41	42-44	42-44	45-47	48-51	48-51	52-55	52-55

COLOR INFORMATION



Black
PMS BLACK C



Grey Heather
PMS NO MATCH



Marshmallow
PMS 7527C



River Blue Navy
PMS 533C