

# Port Authority® Ladies Textured Hooded Soft Shell Jacket. L706

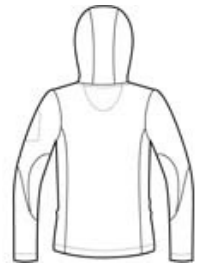


Our hooded soft shell stands up to the elements and stands out with texture and bar tack details. Highly breathable and soft, this water resistant jacket is just right for the workday or the weekend. A hood and zippered sleeve vents add function and up-to-the-minute appeal.

- 96/4 poly/spandex woven shell bonded to a water-resistant film insert and a 100% polyester microfleece
- 1000MM fabric waterproof rating
- 1000G/M<sup>2</sup> fabric breathability rating
- Hood with locking drawcord for adjustability
- Storm flap with chin guard
- Ergonomic zipper pulls
- Princess seams
- Zippered chest and sleeve pockets with contrast bar tack
- Front zippered pockets with contrast bar tack
- Open hem



front



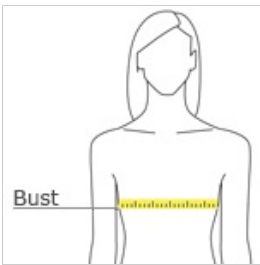
back

### CARE INSTRUCTIONS

Machine wash cold. Do not dry clean. Do not iron. Do not bleach. Do not tumble dry.

[Tips For Effectively Screen Printing Polyester Fabrics](#)

### HOW TO MEASURE



#### BUST

Measure under the arm and around the fullest part of the bust with arms down, keeping tape horizontal.

### SIZE CHART

	S	M	XS	XXL	3XL	4XL	L	XL
Size	4/6	8/10	2	20/22	24/26	28/30	12/14	16/18
Bust	35-36	37-38	32-34	45-47	48-51	52-55	39-41	42-44

### COLOR INFORMATION



Black/ Engine Red



Charcoal/ Lemon Yellow