



# OGIO® Ladies Trax Jacket. LOG726



This forward-thinking jacket fuses a technical grid pattern with stretch side panels for style that moves at your speed.

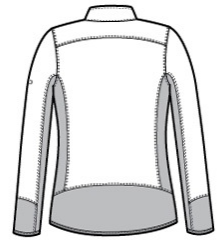
- 100% woven poly shell bonded to 100% poly knit fleece with 93/7 poly/spandex fleece side panels
- OGIO heat transfer label for tag-free comfort
- Reverse coil zippers
- Zippered front pockets with OGIO zipper pulls
- Black reflective O on left sleeve
- Open cuffs and open drop tail hem with binding

### CARE INSTRUCTIONS

Machine wash cold with like colors. Do not bleach. Tumble dry low. Remove Promptly. Cool iron if needed.



front



back

### HOW TO MEASURE



#### BUST

Measure under the arm and around the fullest part of the bust with arms down, keeping tape horizontal.

### SIZE CHART

	XS	S	M	4XL	L	XL	2XL	3XL
Size	2	4/6	8/10	28/30	12/14	16/18	20/22	24/26
Bust	32-34	35-36	37-38	52-55	39-41	42-44	45-47	48-51

### COLOR INFORMATION



Blacktop  
PMS NTR BLACK  
C