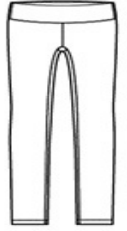


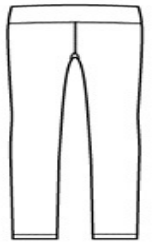


With plenty of stretch for movement, this moisture-wicking legging complements an active lifestyle.

- 8.3-ounce, 87/13 poly/spandex jersey
- Tag-free label
- Wide waistband with hidden pocket
- Flatlock seams for comfort
- No exterior leg seams for easy decoration
- 7/8 length

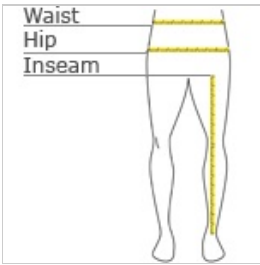


front



back

HOW TO MEASURE



WAIST

Measure around the smallest part of the natural waist.

HIPS

With feet together, measure around the fullest part of hips, keep tape horizontal.

INSEAM

Measure a similar style pant that fits well and is the desired length. Measure from the crotch seam to the hem.

SIZE CHART

| | XS | S | M | L | XL | XXL | 3XL | 4XL |
|--------|--------|-------|--------|-------|--------|-------|-------|-------|
| Size | 2 | 4/6 | 8/10 | 12/14 | 16/18 | 20/22 | 24/26 | 28/30 |
| Waist | 24-26 | 27-28 | 29-30 | 31-33 | 34-36 | 37-39 | 40-43 | 44-47 |
| Hip | 34-36 | 37-38 | 39-40 | 41-43 | 44-46 | 47-49 | 50-53 | 54-57 |
| Inseam | 30 1/2 | 31 | 31 1/2 | 32 | 32 1/2 | 33 | 33 | 33 |

COLOR INFORMATION



Black
PMS NTR BLACK
C