



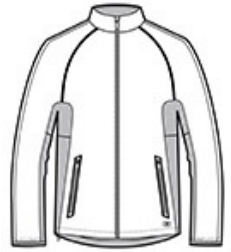
ALLOVER REFLECTION

WATER-RESISTANT

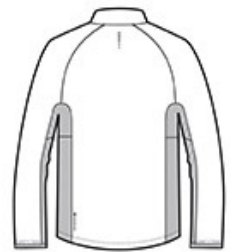
WIND-RESISTANT

DESIGNED FOR DAY-INTO-NIGHT ACTIVE PURSUITS
LIKE RUNNING & CYCLING

- 100% poly shell with mesh lining
- Reflective OGIO Endurance heat transfer label for tag-free comfort
- Zip-through cadet collar
- Reverse coil zippers with locking pulls
- Contrast stacked O heat transfer at center back
- Raglan sleeves
- Elastic cuffs
- Front zippered pockets with heat transfer welding details
- Embroidery access pocket
- Contrast O Endurance heat transfer at back right seam
- Slight drop tail hem with drawcord and toggle for adjustability
- Contrast O heat transfer at front left hem



front



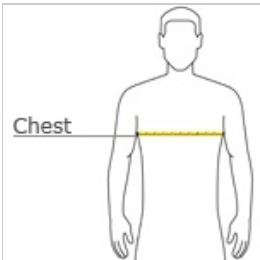
back

Due to the nature of the highly technical fabric in the reflective shell, this jacket may be more sensitive to scratches and fading. Special care must be taken throughout the decorating process.

CARE INSTRUCTIONS

Machine wash cold separately, delicate cycle. Hang to dry. Do not bleach. Do not iron. Do not dry clean.

HOW TO MEASURE



CHEST WIDTH

Measure under the arm and around the fullest part of the chest with arms down, keeping tape horizontal.

SIZE CHART

	XS	S	M	L	XL	2XL	3XL	4XL
Chest	32-34	35-37	38-40	41-43	44-46	47-49	50-53	54-57

COLOR INFORMATION



Reflective/
Blacktop

