



This double knit, cotton-rich pullover is a triumph with integrated pockets and rubberized zippers for a modern look and feel.

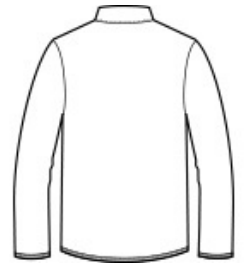
- 7.1-ounce, 71/29 cotton/poly double-knit fleece
- Cadet collar
- Tag-free label
- Rubberized center front zipper
- Front pouch pocket with integrated rubberized zippered pocket

CARE INSTRUCTIONS

Machine wash cold with like colors; do not use fabric softener; only non-chlorine bleach, when needed; tumble dry low; remove promptly; cool iron, if necessary; do not dry clean.



front



back

HOW TO MEASURE



CHEST WIDTH

Measure under the arm and around the fullest part of the chest with arms down, keeping tape horizontal.

SIZE CHART

	XS	S	M	L	XL	2XL	3XL	4XL
Chest	32-34	35-37	38-40	41-43	44-46	47-49	50-53	54-57

COLOR INFORMATION



Black
PMS NTR BLACK
C



Black Heather
PMS NTR BLACK
C



Dark Grey Heather
PMS COOL GRAY
11C



Navy
PMS 5255C



Olive Heather
PMS 7764C