



# Sport-Tek® Exchange 1.5 Long Sleeve Crew. ST710

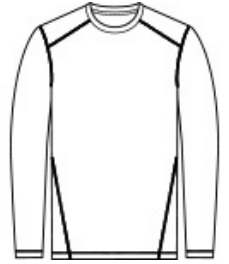


Why did we name this stretchable crew the 1.5? Because it's light enough to wear as a tee, but warm enough to be a light layer.

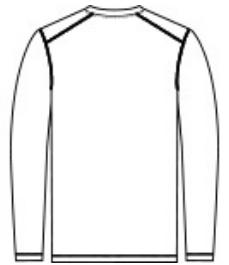
- 5.6-ounce, 88/12 poly/spandex
- Removable tag for comfort and relabeling
- Coverstitch seams throughout

### CARE INSTRUCTIONS

Machine wash with like colors. Do not use fabric softener, only non-chlorine bleach, when needed. Tumble dry low, remove promptly. Cool iron if necessary. Do not dry clean.



front



back

### HOW TO MEASURE



#### CHEST WIDTH

Measure under the arm and around the fullest part of the chest with arms down, keeping tape horizontal.

### SIZE CHART

	XS	S	M	L	XL	2XL	3XL	4XL
Chest	32-34	35-37	38-40	41-43	44-46	47-49	50-53	54-57

### COLOR INFORMATION



Dark Denim  
Heather  
PMS 2380C



Graphite Heather  
PMS COOL GRAY  
11C



Grey Heather  
PMS COOL GRAY  
10C



True Royal Heather  
PMS 7687C